

blaugelb Installation Screws

Product information

A universal fastener for the dowelless, efficient assembly of components made of timber, uPVC, aluminum and timber/aluminum in various substrates (concrete, sand-lime brick, solid brick, timber, lightweight concrete, aerated concrete, high-hole brick).

Product advantages

- approved and market-proven attachment
- universal application in many common building materials
- suitable for clamping
- tapered thread tip reduces screwing torque
- distance fixing without side locking

Pan Head Installation Screw



Frame fixing pan head screw is particularly suitable for the following application:

- direct fastening for the tension-free installation of windows and doors
- suitable for all frame materials
- can be used without lateral distance blocking

Product code	Description	Driver	Thickness (mm)	Size (mm)	Packaging unit
0422314	Window installation screws	TX30	7.5	62	100
0422319	Window installation screws	TX30	7.5	82	100
0422321	Window installation screws	TX30	7.5	102	100
0422325	Window installation screws	TX30	7.5	122	100
0422329	Window installation screws	TX30	7.5	152	100

Note: TX30 driver bit available for purchase - product code 0009075835.

Bullet Head Installation Screw



Frame fixing bullet head screw is particularly suitable for the following application:

- direct fixing for the tension-free installation of windows and doors
- suitable for all frame materials
- can be used without lateral distance blocking
- preferably used in timber and timber/aluminum windows

Product code	Description	Driver	Thickness (mm)	Size (mm)	Packaging unit
0423709	Window installation screws	TX30	7.5	62	100
0423711	Window installation screws	TX30	7.5	82	100
0423713	Window installation screws	TX30	7.5	102	100
0422715	Window installation screws	TX30	7.5	122	100
0423717	Window installation screws	TX30	7.5	152	100

Note: TX30 driver bit available for purchase - product code 0009075835.

Window Installation Screws - Countersunk Head

Product information

Small fixing head for flush finish.



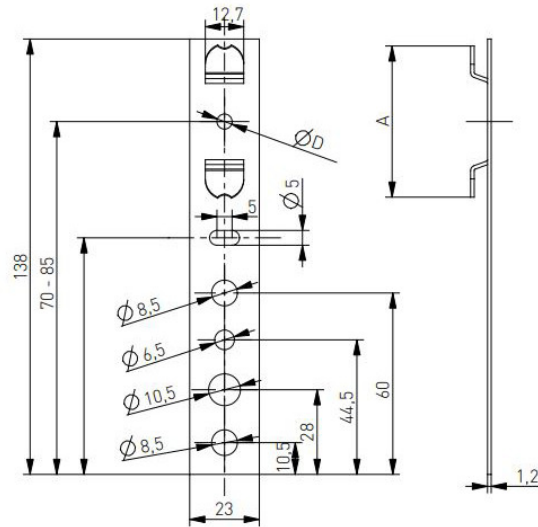
Product code	Description	Driver	Size (mm)	Packaging unit
6606027407	Window installation screws	TX30	7.5 x 82	100
6606027421	Window installation screws	TX30	7.5 x 102	100
6606027435	Window installation screws	TX30	7.5 x 122	100
6606027449	Window installation screws	TX30	7.5 x 152	100
6606027456	Window installation screws	TX30	7.2 x 182	100

Note: TX30 driver bit available for purchase - product code 0009075835.

uPVC Window Installation Anchors - Turn In

Product information

To aid in the installation of uPVC windows (1.2mm thick).



Product code	Description	Dimension A (mm)	Profile	Packaging unit
66025000100	Turn in installation bracket	25.0	Brugmann / Aluplast 7000 / Aluplast 8000	1000
66028000100	Turn in installation bracket	28.0	Salamander	1000
66032000100	Turn in installation bracket	32.0	Gealan 3000 / Bluevolution	1000
66037000100	Turn in installation bracket	37.0	Aluplast / LB / Wintech / Drutex / Decco 60 / Wital	1000
66041000100	Turn in installation bracket	41.0	Schuco / Rehau / KBE 88+ / Trocal	1000
66042500100	Turn in installation bracket	42.5	Veka	1000
66044500100	Turn in installation bracket	44.5	Gealan 8000/9000	1000
66044500100N	Turn in installation bracket	44.5	KBE 70 / Kommerling Euro / Inoutic Arcade / Inoutic E-Forte	1000
66046000100	Turn in installation bracket	46.0	Decco 70	1000
66048000100	Turn in installation bracket	48.0	Profine 76	1000
66049000100	Turn in installation bracket	49.0	Awangarde / Inoutic Prestige	1000
66050000100	Turn in installation bracket	50.0	Brugmann AD	1000

uPVC Window Installation Anchors - Knock In

Product information

Rotatable drop-in anchor fitting with 25mm width for different uPVC profiles, drilling through the window frame is not necessary. Fastening of the plate in the wall with different screws is possible.

Product advantages

- the clamp can be easily driven into the window profile
- the fastening point in the wall can be freely positioned with the rotatable plate
- designed with one or two target bending points
- no hindrance in case of a thermally caused change in length of the window frame



Product code	Description	Thickness (mm)	Length (mm)	Packaging unit
451-035	Window anchor - Aluplast 2000-7000	1.25	150	250
455-016	Window anchor - Aluplast 2000-7000	1.25	200	150
466-005	Window anchor - Aluplast 2000-7000	2.00	260	150
451-033	Window anchor - Deceuninck Zendow	1.25	150	250
455-005	Window anchor - Deceuninck Zendow	1.25	200	200
466-033	Window anchor - Deceuninck Zendow	2.00	260	150
450-037	Window anchor - KBE 70mm	1.25	150	250
453-037	Window anchor - KBE 70mm	1.25	200	150

Timber Window Installation Anchors

Product information

Grip points for locating on window, ideal for situations without a reveal.

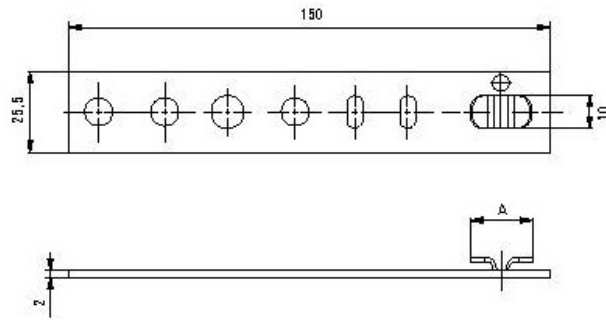


Product code	Description	Size (mm)	Packaging unit
102279675	Window installation bracket	140 x 19	1

ALU Window Installation Anchors

Product information

Turn and grip style for quick and easy installation.



Product code	Description	Dimension A (mm)	Profile	Packaging unit
66219000105	Steady montage anchor	16.5	Schuco	250
66219000103	Steady montage anchor	18.5	Aluplast / Aluprof / Ponzio / Yawal / Aluron	250

blaugelb Protect Window Installation Brackets

Product information

Easily adjustable fastening system for timber, uPVC and aluminum windows, which can be installed all around at any required fastening point.



Product code	Description	Dimensions (mm)	Material	Packaging unit
0428830	Installation brackets	150 x 50 x 2.5	galvanised steel	50
0428835	Installation brackets	220 x 50 x 2.5	galvanised steel	25
0428839	Installation brackets	280 x 50 x 2.5	galvanised steel	25
0428842	Assembly key 13mm	-	galvanised steel	1

Soudal Gun Expanding Foam

Product information

Polyurethane based insulation and filling foam which forms a permanent, air tight and waterproof bond to wood, metal, glass, masonry, polystyrene, concrete and most plastics (not on PE, PP). It is fitted with the revolutionary new Duravalve which ensures longer shelf life, non-clogging and higher yield per can.



Product code	Description	Size (ml)	Packaging unit
130278	PU gun foam trigger	750	12

Soudal Foam Gun Cleaner

Product information

Gun & foam cleaner is a ready to use cleaning aerosol can for use on Soudafoam Gun and Soudal foams.



Product code	Description	Size (ml)	Packaging unit
106310	PU gun & foam cleaner	500	12

Universal Positioning Spreader URP

Product information

Precise, fast and failure-free window positioning during installation, enabling complete control of positioning and spreading force for uPVC, aluminium and timber windows.



Product code	Description	Material	Packaging unit
800EMOURP	Positioning wedge	plastic	100

blaugelb Joint Sealing Tape 300

Product information

Used for sealing strip joints and window installations, suitable for joint widths between 2-6mm, 5-12mm, and 9-20mm.



Product code	Description	Joint width (mm)	Width (mm)	Length (m)	Packaging unit
0418855	Installation compression tape	2-6	15	12	20
0418858	Installation compression tape	5-12	20	5.6	15
0418860	Installation compression tape	9-20	20	3.3	15

Flat Installation Profile

Product information

Flat internal trim with adhesive strip, recommended for internal use.

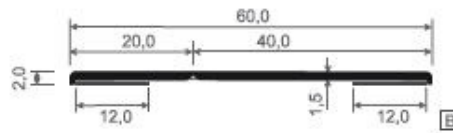
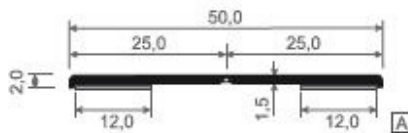


Product code	Description	Width - A (mm)	Thickness (mm)	Colour	Packaging unit
0782025R	Flat installation profile	20	2.5	white	150m roll
0783025R	Flat installation profile	30	2.5	white	150m roll
0784025R	Flat installation profile	40	2.5	white	150m roll
0785025R	Flat installation profile	50	2.5	white	150m roll
0783025R 09	Flat installation profile	30	2.5	cream	150m roll
0785025R 09	Flat installation profile	50	2.5	cream	150m roll
0782025 WLR	Flat installation profile with soft lip	20	2.5	white	150m roll
0783025 WLR	Flat installation profile with soft lip	30	2.5	white	150m roll

Kink Angle Installation Profile

Product information

Kink angle trim with adhesive strip, recommended for internal use.



Product code	Description	Size (mm)	Colour	Packaging unit
0782525R	Kink angle installation profile	25 x 25	white	150m roll
0782040R	Kink angle installation profile	20 x 40	white	150m roll



Window Carry Strap

Product information

Easily secured with the preinserted self drilling screw, enables secure and slip resistant lifting.



Product code	Description	Dimensions (mm)	Carry weight (kg)	Packaging unit
GTCS001	Carry strap with 4.2 x 25mm self drilling screw	450 x 22	up to 100	500

Cosmofen Service Kit

Product information

Convenient kits for cleaning, care, protection and servicing of window and door profiles, and seals and mechanisms.



Cleaning & Care SERVICE SETS for windows and doors

KIT CONTAINS:

Cleansing Milk

Abrasive, solvent-free intensive cleanser for anodized aluminium windows, doors and roller shutters as well as for polyurethane windows and for all white PVC windows and roller shutters.

Gasket Care

For maintenance and servicing of the gaskets. Sustains the softness and prevents gaskets sticking on the profile in summer and freezing on the profile in winter.

Fitting Oil

For maintenance and servicing of the fittings and hinges. Sustains the required gliding properties of the moving parts, thus prevents the metals from grinding dry in combination with corroding/digging in. Also provides additional rust protection.

Cleaning Cloth

One cleaning cloth is included in the kit.



Maintenance of the fittings



Cleaning of surfaces



Maintenance of the gaskets

Product Code - W496010 (white) / W498004 (colour) - Technical Data

BASIS	2-component polymerisation resin on acrylic basis	
COLOUR	of hardened up film	white approx. RAL9016
FILM PROPERTY	of hardened up film	(similar to PVC-hard) hard impact resistance
MIXING RATIO	powder : paste in parts by weight	= 13:6g
VISCOSITY	at +20°C, immediately after the mixing	thixotrope
APPLICATION TIME	of the mini-set at +20°C (the application time is half as short at +30°C and twice as high at +10°C)	approx. 5 min
GRINDING RESISTANCE	at +20°C	after approx. 25 min
FINAL SETTING TIME	at +20°C, 50% rel. air humidity at ~90% Until functional hardness has been reached	approx. 120 min approx. 1d
MINIMUM TEMPERATURE FOR APPLICATION		from +5°C