

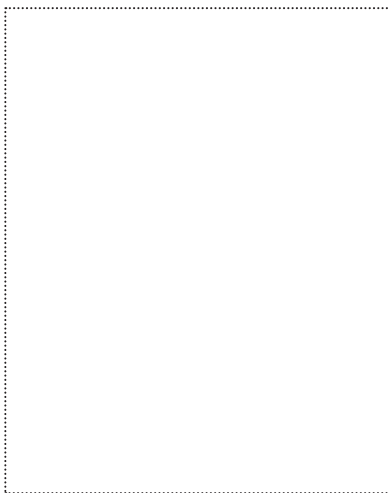


AIRSTOP PLASTO

To guarantee air and wind-tightness for the skin of a construction it must have the appropriate foils or panel materials providing a permanent seal at overlaps, gaps, joints and penetration points. AIRSTOP PLASTO is a butyl rubber adhesive tape with fleece base that can be painted over and plastered over. The divided separating paper permits exact work in corners and at intersections.

FIELD OF APPLICATION

- Joints on masonry that can be plastered or painted over
- Can be used to seal base (load condition 'non-pressurizing water')
- in accordance with ÖNORM B3692 standard and directive 'Base Connection in Timber Construction'
- Second water-bearing layer
- Base, also in connection with OMEGA PoBit Sealing Compound
- Cables and pipes (Curves)
- Interior and exterior corners (flexibility)
- Covering corners
- Suitable for chimney and roof-window joints (formation of corners)



AVAILABLE IN THE FOLLOWING DIMENSIONS

Roll width	75 mm	100 mm	150 mm	200 mm	300 mm
Roll length	25 m	25 m	25 m	25 m	25 m
Rolls/carton	4	2	2	1	1

PRODUCT DATA

Composition	butyl-rubber adhesive tape combined with non woven fabric
Thickness	0,8 mm
Resistance to temperature	- 40 °C - + 100 °C
Working temperature	- 5 °C - + 40 °C
UV-resistance	4 Months
Colour	grey, with white fleece
Storage	2 years; cool and dry
Fire performance	E

ADVANTAGE

- Can be plastered and painted over
- Split liner
- High adhesive properties of Butyl adhesive
- Unevenness in substrate is compensated by the thick adhesive layer
- Water-tight, elastic
- Suitable for low temperatures
- Adheres to bitumen using primer spray

01/2020_EN

ISOCELL

PROCESSING GUIDELINE AIRSTOP PLASTO

Materials used must be free from dust and grease and the substrates must be dry and firm. AIRSTOP PLASTO functions neither as a seal nor as a tight bond. Optimum adhesion to the substrate is achieved in combination with BUBI LF Adhesive Primer or with UNI primer.

On highly porous and absorbent substrates such as concrete, plaster, untreated steel and rough timber, as well as tape overlaps, we recommend pre-treatment of the substrate with Isocell bonding primers.

AIRSTOP PLASTO must be glued over the full surface. Joints > 5mm must be filled out.

Butyl and bitumen tapes have a high inherent weight.

The tape must be mechanically secured in case of installation in projecting areas e.g. ceilings, cantilevers and soffit areas, where gravity acts directly on the tape.

Edges can be implemented very well without voids using the pressing doctor blade. On rough and uneven substrates, adhesion is achieved over the entire surface using the soft AIRSTOP ROLL pressing roller made of cellular rubber.

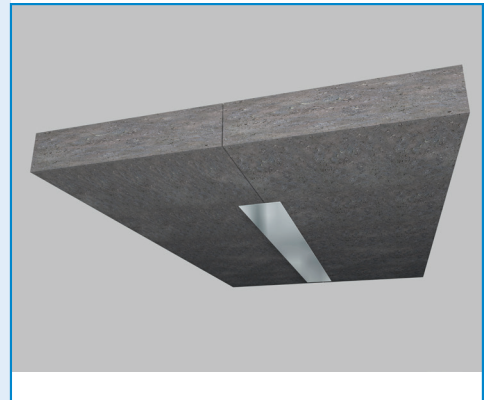
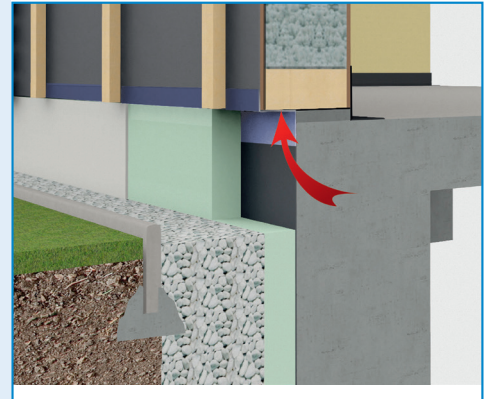
RECOMMENDED ACCESSORIES

UNI Spray primer

Pressure squeegee

UNI MS Adhesive Sealant

AIRSTOP ROLL pressure roller



ISOCELL GmbH & Co KG
Gewerbstraße 9
5202 NEUMARKT AM WALLERSEE | Österreich
Tel.: +43 6216 4108 | Fax: +43 6216 7979
office@isocell.at

ISOCELL SCHWEIZ AG
Herbergstrasse 29
9524 ZUZWIL | Suisse /Schweiz
Tel.: +41 71 544 47 20
office@isocell.ch

ISOCELL FRANCE
170 Rue Jean Monnet | ZAC de Prat Pip Sud
29490 GUIPAVAS | France
Tel.: +33 2 98 42 11 00 | Fax: +33 2 98 42 11 99
contact@isocell-france.fr

ISOCELL BUREEL BELGIË
Außenborner Weg 1 | Schoppen
4770 AMEL | Belgique
Tel.: +32 80 39 90 58 | Fax: +32 80 39 97 68
office@isocell.be

ISOCELL Sverige AB
Box 20059
161 02 BROMMA | Sverige
Tel.: +46 10 130 25 00
info@isocell.se

ISOCELL
www.isocell.com