

Siegenia Aeropac

Product information

The small sound absorbing ventilator with big benefits: quiet, powerful, easy to use, quick to install.

There is a proven solution that has been used in countless projects to combat the increased noise pollution from fresh air supply systems: our sound-absorbing ventilator AEROPAC® – compact, quiet as a whisper, and with well over one hundred thousand installations. In combination with sound insulated windows, its sound absorption makes your own four walls a place of tranquility and relaxation again, regardless of road, rail or air traffic outside. Other environmental problems such as fine dust and pollen stay outside too, thanks to three different, optional filters.

The air exchange of the AEROPAC® can be conveniently set at several levels, as required, via the LCD. This little all-rounder consumes just 5W at 60 m³/h.

Product information

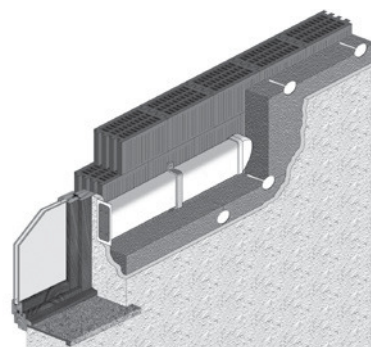
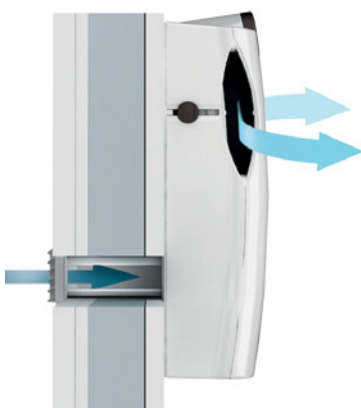
- highly effective sound absorption for a quiet and peaceful sleep
- draught-free ventilation, quiet as a whisper
- LCD display: air flow setting and programmable timer
- individual air control via sliders on the side
- 3 optional filters: coarse dust, activated carbon, and fine dust/pollen
- filter cassettes and a change indicator make changing the filter easy
- extremely small dimensions and elegant, high-gloss casing
- can be controlled via Z-Wave wireless system
- AEROPAC® can be easily installed on the sill
- smart variant can be operated with the SIEGENIA Comfort app

Simple installation

- core drill a hole in the outer wall
- fix pipe and weather grille in place
- alternative installation with vent duct, for example for composite thermal insulation systems

Product advantages

- controlled extraction of fresh air through the external wall – quiet, energy-saving, and with optimal sound absorption
- the air is cleaned through a coarse dust filter, an optional pollen/fine dust filter or an activated carbon filter
- individual control via a slider on the side – even, draughtfree fresh air supply



Installation with reveal channel

Siegenia Aerocube

Product information

The infinitely variable passive ventilator with effective sound absorption.

Convenience, a comfortable indoor environment, sound absorption and demand-controlled ventilation are all taken for granted with the AEROCUBE passive ventilator. Specially designed air outlets on the inner cover permit optimised air distribution. A regulating valve ensures infinite and convenient adjustment of the air distribution. A wind pressure barrier has been integrated to minimise draughts.

Aerocube product advantages

- fresh air supply through the outer wall when windows are closed
- outside air filtering by a G2 filter
- wind pressure barrier prevents draughts
- variable flow control
- high sound absorption thanks to special sound absorption pipe
- can also be used in bedrooms and children's rooms
- suitable for apartment buildings, single-family homes and office buildings on new build and renovation projects alike

Simple installation

- drill a 15 cm diameter hole into the outer wall
- attach pipe and weather grille
- install the inner cover



Aerocube with vent duct UFD

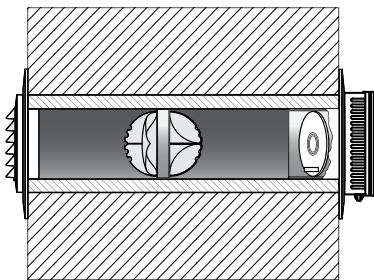
If the customer not only requires demand-controlled ventilation but also an uninterrupted facade view or high sound absorption as well, then AEROCUBE with the UFD vent duct is the right choice. It fulfills the same functions as the AEROCUBE. The UFD vent duct variants permit different building applications within the facade. Sound insulation values of up to 68 dB can also be achieved.

Aerocube with vent duct UFD product advantages

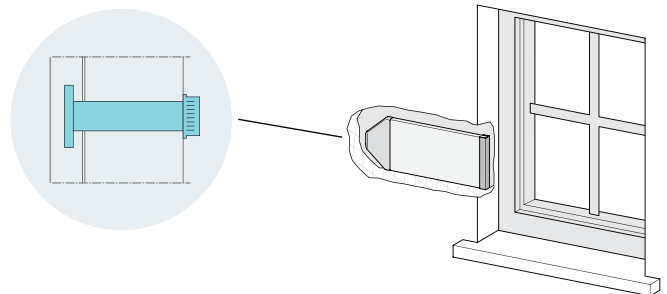
- product benefits: like the AEROCUBE
- high sound absorption up to 68 dB thanks to special sound absorption pipe
- flexible adjustment to the building structures
- unobstructed outside view of the facade due to virtually concealed installation: in the window reveal, on the side of the window reveal, under the wall or on the side of the window under the wall

Easy to install

- like the AEROCUBE, but with an 11 cm diameter hole
- installing the vent duct



Standard installation with wind pressure barrier



Installation in the window reveal

Siegenia Aerotube System

Product information

The wall mounted ventilator with supply and exhaust air functions, heat recovery and humidity sensor.

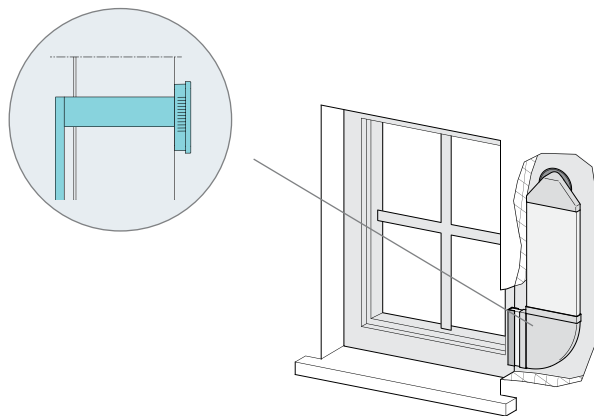
The AEROTUBE is discreet in appearance and offers maximum convenience in relation to the required level of ventilation in both new builds and renovations. It offers absolute room comfort because, due to its versatility, a wide range of ventilation requirements can be achieved individually, or as part of a system. The appropriate solution for practically every requirement whether this is active or passive, with or without heat recovery, air supply or air extraction operation.

Product information

- uniformly elegant interior appearance and low space requirement: the functional element is located in the pipe
- different unit versions
- up to 90% heat recovery, mechanical supply/exhaust air or on a pressure differential basis
- suitable for renovations and new builds
- devices with manual locking or optionally with electrical locking
- intelligent networking without a separate cable in the 'smart' version
- the air direction can also be assigned after installation
- operation via smartphone or tablet in the 'smart' version
- efficient humidity control as standard in the 'smart' version
- vent duct for AEROTUBE DD 110 and AEROTUBE DD 150
- sound absorption requirements up to 70dB possible

Versions of Aerotube

- AEROTUBE WRG smart: Ventilation unit which can switch between supply and exhaust air and heat recovery
- The AEROTUBE AZ smart can be used as a supply air or exhaust air ventilation unit
- AEROTUBE DD 110, 150 or 160: ventilation unit on a pressure differential basis, can be used for supply or exhaust air, vent duct optional



Installation option: Aerotube DD150 with vent duct SFL

Siegenia Aerotube System - continued

Product information

The right solution for every need.

As the requirements for controlled ventilation can be so different, the AEROTUBE can adapt accordingly. The AEROTUBE WRG smart is an extremely energy-efficient ventilation unit. The automatic demand-controlled ventilation adapts the volume flow to the room conditions. The economic operating mode coupled with high heat recovery leads to one of the most energy-efficient devices in its class and it has been granted the A+ label. This means the highest standard of controlled room ventilation.

The AEROTUBE WRG smart can be used in pairs and also spanning the room. The alternating operation mode enables supply air and exhaust air operation with heat recovery, changing in one minute cycles. If desired, the AEROTUBE WRG smart can also be set to either one of supply air or exhaust air mode.

The AEROTUBE AZ goes into action where either exhaust air or supply air is required. With its uniform appearance, the active ventilator can be used as a supply air unit in one room and as an exhaust air extraction unit in another room. Operation in pairs is also possible. Further rooms can likewise be equipped according to demand. The different versions of the AEROTUBE series can also be combined. A decentralised ventilation system can be achieved at little expense due to the device's diversity. The WLAN function is also available as standard with the AEROTUBE WRG smart.

Aerotube WRG product information

- supply and exhaust air operation with heat recovery
- single operation or operation in pairs, also spanning the room
- alternating operation mode
- cycle times approx. 1 minute
- exhaust air operation / supply air operation / cross ventilation

Aerotube AZ product information

- single operation or operation in pairs, also spanning the room
- exhaust air operation / supply air operation
- cross ventilation (at least two devices required)
- can be subsequently retrofitted with heat recovery

Easy to install

- core drill a hole in the outer wall
- fix pipe and weather grille in place
- as no cable has to be routed between the devices, the installation expenditure is reduced
- subsequent function assignment of devices possible on site and after installation



Aerotube WRG smart



Aerotube AZ smart

Siegenia Aerolife

Product information

The energy saving universal ventilator with pollen protection and heat recovery.

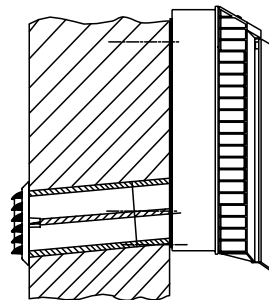
This wall-mounted ventilator scores well too in terms of energy saving ventilation without noise pollution and its pollen filter system. This makes it a particularly good solution for bedrooms and living spaces. Both AEROLIFE® and AEROVITAL® are suitable for use in new builds and renovations thanks to their easy installation.

Product information

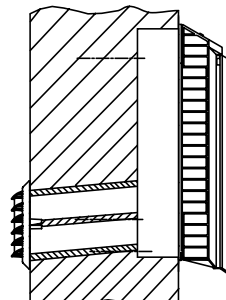
- the device has 3 setting levels for the blower
- backlit LCD
- pollen filtering
- heat recovery of up to 66%
- indicates room temperature, air humidity and whether the filter needs to be replaced
- integrated closing flaps

Simple installation

- drill a hole with a diameter of 12cm in the outer wall
- fix pipe and weather grille in place
- on-wall and in-wall mounting possible



On-wall installation



In-wall installation

Siegenia Sensoair

Product information

The intelligent air quality sensor with CO² and VOC control for activating window mounted and wall mounted ventilators.

The SENSOAIR gives you the green light for clean air and a healthy sense of well-being for maximum benefit. The intelligent air quality sensor registers many different types of pollution in the room air – before the human body can even react and the recommended values have been exceeded. By automatically activating the wall-mounted or window-mounted ventilators as needed, it combats CO², nicotine, smoke and unpleasant odours for air quality that you can see. The current status of the air in the room can be checked with a glance at the ventilation traffic lights integrated into the casing.

Product information

- recognises many different pollutants in the room air
- for simple, convenient and needs-based ventilation
- elegant design, trouble-free installation
- can be used anywhere with conventional wiring

Function options

- SENSOAIR plus for controlling ventilation units and motorised drives
- SENSOAIR smart for integration in the SIEGENIA Comfort app

