



uPVC Outward Opening Catalogue

Awning - Elite 05 (Scissor Style)	2
Operator	2
Crank Cover	3
Lockable Crank Cover	4
Eurogroove Adaptors	5
Awning - Elite 04 (X Style)	6
Operator	6
Eurogroove Track	7
Crank Cover	8
Lockable Crank Cover	9
Casement - Elite 06 (Single Arm)	10
Operator	10
Eurogroove Track	11
Crank Cover	12
Lockable Crank Cover	13
Sash Locks	14
Sash Lock	14
Latch Plate	15
Striker Plate	16

Elite-05 Awning Window Operator

Awning window operator to suit uPVC window systems.



Product Code	Description	Colour	Packaging Unit
ELITE-05(BG)	O-Style awning operator	beige	20

*Note: OSC adaptor piece (available as kits) is required to affix into the Eurogroove.



Catalogue not up to date?
Scan the QR or [click here](#)
to view the latest version

[Click to jump back to top](#)

Crank Cover for Elite-05

Non-lockable cover set to suit Elite-05 operator. Includes plastic cover and metal operator arm.



Product Code	Description	Colour	Packaging Unit
FH-03A(BLK)	Crank cover	black	100
FH-03A(OW)	Crank cover	white	100
FH-03A(SIL)	Crank cover	silver	100



Catalogue not up to date?
Scan the QR or [click here](#)
to view the latest version

[Click to jump back to top](#)

Lockable Crank Cover for Elite-05

Lockable crank cover to suit Elite-05 operator. Simple click on installation.



Product Code	Description	Colour	Packaging Unit
FH-08A(BLK)	Lockable crank cover	black	20
FH-08A(OW)	Lockable crank cover	white	20
FH-08A(SIL)	Lockable crank cover	silver	20



Catalogue not up to date?
Scan the QR or [click here](#)
to view the latest version

[Click to jump back to top](#)

OSC Eurogroove Adaptor

Adaptor piece to join Elite-05 operator into the Eurogroove of uPVC window systems. Kit includes adaptor piece and stainless-steel circlip.



Product Code	Description	Colour	Packaging Unit
OSC-01-KIT-1	Single adaptor kit for Eurogroove	black	1
OSC-01-KIT-20	20 pack adaptor kit for Eurogroove	black	1
9051255	1000pcs Blaubelb Installation Screw 4 x 16mm	-	1
9051256	1000pcs Blaubelb Installation Screw 4 x 20mm	-	1

*2 x Installation screws required per adaptor (purchase seperately)



Catalogue not up to date?
Scan the QR or [click here](#)
to view the latest version

[Click to jump back to top](#)

Elite-04 X-Style Casement Operator

X style awning operator



Product Code	Description	Colour	Packaging Unit
ELITE-04(BG)	X-Style awning operator	beige	20

*Note: Elite-04 also requires an operator bracket and track.



Catalogue not up to date?
Scan the QR or [click here](#)
to view the latest version

[Click to jump back to top](#)

Elite-04 X-Style Casement Operator Sash Track

Track to suit Elite-04 X style operator.



Product Code	Description	Colour	Packaging Unit
ELITE-04-3(BG)	X-Style awning operator track	beige	40



Catalogue not up to date?
Scan the QR or [click here](#)
to view the latest version

[Click to jump back to top](#)

Crank Cover for Elite-04

Non-lockable cover set to suit Elite-04 operator. Includes plastic cover and metal operator arm.



Product Code	Description	Colour	Packaging Unit
FH-03A(BLK)	Crank cover	black	100
FH-03A(OW)	Crank cover	white	100
FH-03A(SIL)	Crank cover	silver	100



Catalogue not up to date?
Scan the QR or [click here](#)
to view the latest version

[Click to jump back to top](#)

Lockable Crank Cover for Elite-04

Lockable crank cover to suit Elite-04 operator. Simple click on installation.



Product Code	Description	Colour	Packaging Unit
FH-08A(BLK)	Lockable crank cover	black	20
FH-08A(OW)	Lockable crank cover	white	20
FH-08A(SIL)	Lockable crank cover	silver	20



Catalogue not up to date?
Scan the QR or [click here](#)
to view the latest version

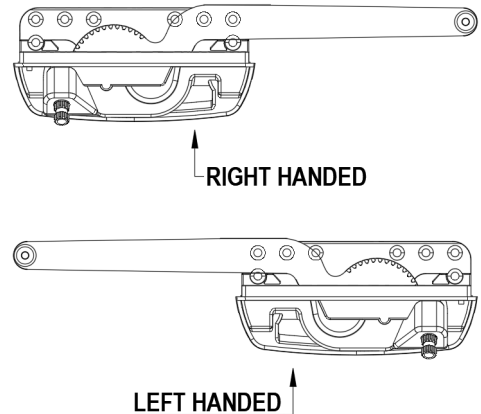
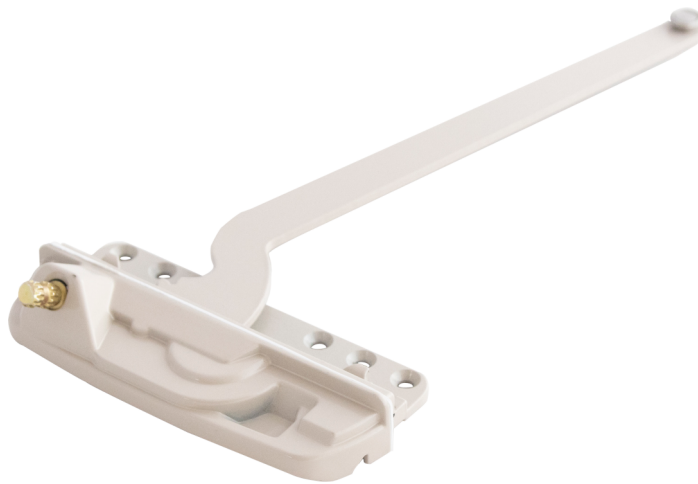
[Click to jump back to top](#)

Elite-06 Single Arm Casement Operator

Casement window operator to suit uPVC window systems. Available in left and right sided operation in several lengths.

Elite-6 operator requires a track to be installed on the sash to operate (Part code: 380 TRACK)

Left handed operators require type A covers and right handed operators require type B covers.



P+X19roduct Code	Description	Arm Length (inch)	Handing	Colour	Packaging unit
ELITE-06L-8	Single arm casement operator	7.5	left	beige	10
ELITE-06L-10	Single arm casement operator	9.5	left	beige	10
ELITE-06L-14	Single arm casement operator	13.5	left	beige	10
ELITE-06R-8	Single arm casement operator	7.5	right	beige	10
ELITE-06R-10	Single arm casement operator	9.5	right	beige	10
ELITE-06R-14	Single arm casement operator	13.5	right	beige	10



Catalogue not up to date?
Scan the QR or [click here](#)
to view the latest version

[Click to jump back to top](#)

Guide rack for Elite-06

Track to attach to the sash to allow the Elite-06 casement operator to slide.



Product Code	Description	Handing	Colour	Packaging unit
380 TRACK	Single arm track	left & right	stainless steel	1



Catalogue not up to date?
Scan the QR or [click here](#)
to view the latest version

[Click to jump back to top](#)

Crank Cover for Elite-06

Non-lockable cover set for Elite-06 operator. Includes plastic cover and metal operator arm.



Product Code	Description	Handing	Colour	Packaging unit
FH-03A(BLK)	Crank cover	left	black	100
FH-03A(OW)	Crank cover	left	white	100
FH-03A(SIL)	Crank cover	left	silver	100
FH-03B(BLK)	Crank cover	right	black	100
FH-03B(OW)	Crank cover	right	white	100
FH-03B(SIL)	Crank cover	right	silver	100

*Note: Ensure the crank cover set is matched to the correct sided operator.



Catalogue not up to date?
Scan the QR or [click here](#)
to view the latest version

[Click to jump back to top](#)

Lockable Crank Cover for Elite-06

Lockable crank cover to suit Elite-06 operator. Simple click on installation.

Careful attention should be paid to proper ordering of left and right covers.



Product Code	Description	Handing	Colour	Packaging unit
FH-08A(BLK)	Lockable crank cover	left	black	100
FH-08A(OW)	Lockable crank cover	left	white	100
FH-08A(SIL)	Lockable crank cover	left	silver	100
FH-08B(BLK)	Lockable crank cover	right	black	100
FH-08B(OW)	Lockable crank cover	right	white	100
FH-08B(SIL)	Lockable crank cover	right	silver	100

*Note: Ensure the crank cover set is matched to the correct sided operator.



Catalogue not up to date?
Scan the QR or [click here](#)
to view the latest version

[Click to jump back to top](#)

Awning Window Sash Locks

Single point sash lock for use in uPVC window frames to provide locking functionality from the inside without the need for a key. The sash lock can be used on the left and the right sides of the sash.



Product Code	Description	Colour	Packaging Unit
CL-03B(BL)	Awning single point lock	black	75
CL-03B(OW)	Awning single point lock	white	75
CL-03B(SIL)	Awning single point lock	silver	75



Catalogue not up to date?
Scan the QR or [click here](#)
to view the latest version

[Click to jump back to top](#)

Latch Plate Kit for CL-03B Series Sash Lock

Lock plate kit to suit CL-03B series awning window sash locks.



Product Code	Description	Suit Profile	Colour / Finish	Packaging Unit
LP-02(BG)-KIT-1	Single awning sash lock plate kit	Generic	beige	1
LP-02(BG)-KIT-20	20 pack awning sash lock plate kit	Generic	beige	1
LP-A2400-GAL	Single awning sash lock plate	Aluplast Ideal 4000	galvanised	1
6606015780	100pcs Pan head install screws 4.8 x 25mm	-	-	1



Catalogue not up to date?
Scan the QR or [click here](#)
to view the latest version

[Click to jump back to top](#)

Sash Lock Striker

Sash lock striker for CL-03B Series Sash Lock.



Product Code	Description	Material	Packaging Unit
CS-12A(SS)	Sash lock striker - uPVC (Generic)	stainless steel	1
CS-12(SS)	Sash lock striker - timber	stainless steel	1
CS-A2400-SS	Sash lock striker for Aluplast Ideal 4000	stainless steel	1
9051255	1000pcs Blaubelb Installation Screw 4 x 16mm	-	1
9051256	1000pcs Blaubelb Installation Screw 4 x 20mm	-	1

*2-3 installation screws required per striker (purchase seperately)



Catalogue not up to date?
Scan the QR or [click here](#)
to view the latest version

[Click to jump back to top](#)

uPVC Outward Opening Catalogue

*53 Haddon Drive
PO Box 27
Ballan VIC 3342
Australia*

*+61 03 5368 1181
info@siegware.com.au
www.siegware.com.au
www.siegware.co.nz*