



# Automation Catalogue

Automation Catalogue

## Siegenia HS Lift & Slide Automation

As a design element for living concepts where aesthetics matter, the fully automatic DRIVE axxent HSA smart lift-slide drive makes a real impression when it comes to ease of use:

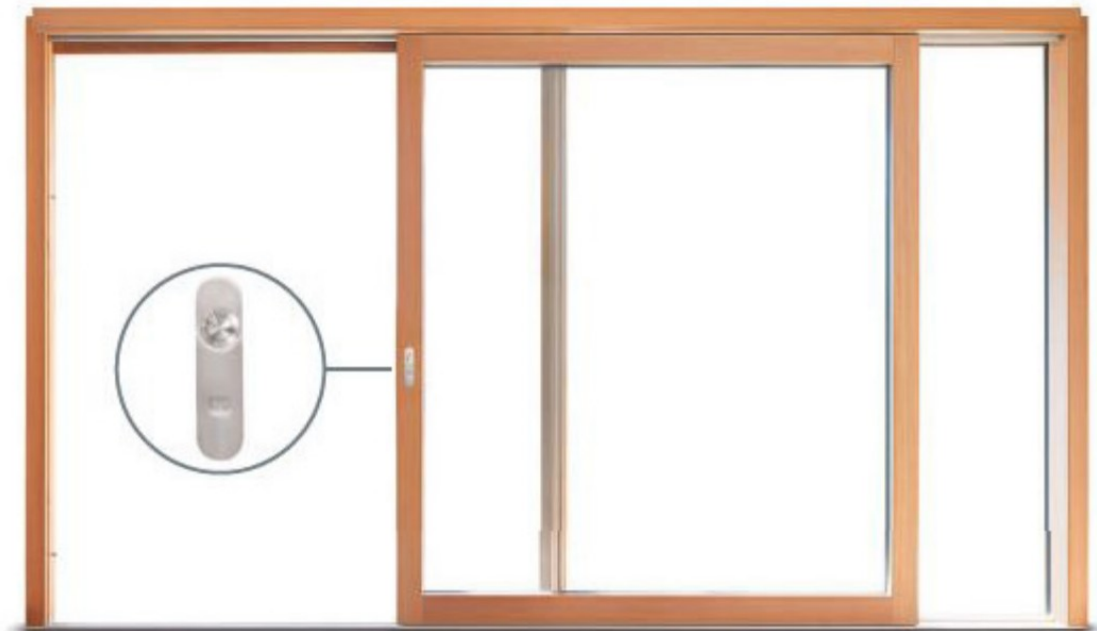
At just the press of a button, it automatically opens and closes lift-slide doors with a sash weight of up to 400 kg. With a concealed design, the lift drive ensures reliable locking and unlocking of extremely large windows and, along with the high quality button, creates a highly attractive look. The sash can be opened or closed either by this button, or conveniently from a smartphone via the SIEGENIA Comfort app.

Benefits for fabricators:

- Suitable for a sash weight up to 400 kg
- Automatic programming, night vent secured with locking bolts, programmable opening width, time facility
- Rapid installation: Drive pre-installed and plug & play system ready for connection

Benefits for users:

- Modern, unobtrusive design thanks to concealed lift drive
- Can be operated via button on the sash, smartphone and tablet (SIEGENIA Comfort app)
- High level of operation safety due to status LED
- Motorised night vent, freely adjustable timer function on in the app from 1-59 minutes
- Option of a limited opening width
- Smooth start and stop motion
- Electronic anti-trap protection feature conforming to relevant standards
- Manual emergency operation



Catalogue not up to date?  
Scan the QR or [click here](#)  
to view the latest version

[Click to jump back to top](#)

## Siegenia MSA400 Smart Slide Automation

**Application :** The MSA400 smart is a motorised slide drive for installation on sash profiles and upper frame profiles.

- Suitable for max. sash weight of approx. 400 kg incl. glass pane (max. 250 kg per sash for scheme E).
- Scheme A inside frame width (RIB): 1,775 mm – 6,666 mm with symmetrical split (installation on asymmetrical elements on request).
- Space required at top of frame approx. 45 mm. The slide drive can be moved downwards (dependent on profile).

**Function :** The MSA400 smart allows you to open and close sliding door elements with ease at the touch of a button.

### Unit properties :

- Movement of sliding door elements (soft start and stop)
- Jam protection on via current limiter, “deadman control” is not required.
- Wheelchair-accessible design and operation in accordance with DIN 18025 and DIN 18030 possible (flat threshold required).
- No restriction on entrance height.
- For universal use, regardless of hardware manufacturer.
- Plug-and-play principle: unpack – screw on – automatic teach-in – ready for operation.
- Simple manual emergency operation in the event of a power failure.
- Integrated 24 V power supplies: plug-and-play ready for retrofitting.
- High level of functional reliability: tested with 400 kg for more than 25,000 switching cycles.
- Available in a natural (unpainted) finish so your own coating can be applied – paint finish in all RAL and NCS colours subject to additional charge.
- Internationally valid CB certified.
- Force limit in accordance with DIN 60335-2-103.
- Can be operated with the SIEGENIA Comfort app as standard.
- Optional infrared remote control.
- Optional design to meet additional safety requirements, pre-equipped for a light curtain.
- The fitting of an additional locking motor (not included in the scope of delivery) enables automatic locking/release and movement of sliding door elements. (soft start and stop)



Catalogue not up to date?  
Scan the QR or [click here](#)  
to view the latest version

[Click to jump back to top](#)

Siegenia Digital Door Lock

- Unlock method:
- Fingerprint (Up to 200)
  - Password (Up to 150)
  - RF Cards(Up to 200)
  - Emergency Key
  - Mobile App
  - NFC equipped smart devices (watch, phone, etc.)



 <b>Waterproof (IP66)</b>	 <b>Both side</b>	 <b>RH, LH Reversible</b>	 <b>wifi</b>
 <b>Finger print</b>	 <b>Pin code</b>	 <b>emergency key</b>	 <b>long battery life</b>
 <b>RF card</b>	 <b>Mobile App</b>	 <b>Use of domestic batteries</b>	

Product Code	Colour	Door Thickness	Material	Packaging Unit
DDLSI-9000B	Black	60mm - 95mm	Stainless Steel	1

\*More colours coming soon



Catalogue not up to date?  
 Scan the QR or [click here](#)  
 to view the latest version

[Click to jump back to top](#)

KFV AS2600 Genius Multi-point Lock

Automated hook and pin lock with RC2 security as standard, internal and external operation via access control systems, manual key override.



Product Code	Description	Faceplate (mm)	Gear Height (mm)	Backset (mm)	PZ Distance (mm)	Spindle (mm)	Packaging Unit
3457316	Genius automated lock	2170	16	35	92	8	1
3454564	Genius automated lock	2170	16	55	92	8	1
3496920	Genius transition cable	n/a	n/a	n/a	n/a	n/a	1
3381675	Magnet	n/a	n/a	n/a	n/a	n/a	1
3470513	Standard power supply	n/a	n/a	n/a	n/a	n/a	1
3498972	Concealed power supply (optional)	n/a	n/a	n/a	n/a	n/a	1

\*Note: Access control systems available on request



Catalogue not up to date?  
Scan the QR or [click here](#)  
to view the latest version

[Click to jump back to top](#)

KFV Genius Access Control System - Keypad

Encrypted AES 128bit data transmission, available for door leaf integration or external installation on, connection with one cable directly to Genius type A or B as well a A-opener.



Product Code	Description	Number of bluetooth devices	Number of keypad code users	Packaging Unit
3493375	Keypad with Bluetooth control	up to 6	up to 18	1



Catalogue not up to date?  
Scan the QR or [click here](#)  
to view the latest version

[Click to jump back to top](#)

KFV Genius Access Control System - Fingerprint Scanner

Fingerprint scanner available for door leaf integration or external installation.



Product Code	Description	Capacity	Packaging Unit
3501219	Fingerprint scanner	up to 90 memory slots	1



Catalogue not up to date?  
Scan the QR or [click here](#)  
to view the latest version

[Click to jump back to top](#)



KFV Genius Remote Kit

Suitable for opening up to 2 doors; the range of the transponder, or wireless receiver is 10-50m, and up to 84 handheld remotes can be programmed.



Product Code	Description	Length (mm)	Voltage	Packaging Unit
3377395	Remote	n/a	n/a	1
3377393	Remote transponder	n/a	24	1
3378078	Type E cable	4	n/a	1



Catalogue not up to date?  
Scan the QR or [click here](#)  
to view the latest version

[Click to jump back to top](#)

### KFV Genius Transponder Tag Kit

Transponder tag kit includes the keyring transponder, the external transponder which receives data from the transponder aerial, the transponder aerial which transmits the data from the external transponder, and the cable used to transmit power or signals.



Product Code	Description	Length (mm)	Voltage	Packaging Unit
3406519	Transponder tag	n/a	n/a	1
3406512	Transponder unit	n/a	12 or 24	1
3406518	Transpoder antenna	n/a	n/a	1
3378078	Type E cable 4m	4	n/a	1



Catalogue not up to date?  
Scan the QR or [click here](#)  
to view the latest version

[Click to jump back to top](#)

KFV Genius Remote Switch System

GSM switch module alarm can be activated via SMS in case of unauthorised opening of the door, or GSM switch module.



Product Code	Description	Capacity	Packaging Unit
3502042	GSM remote switch system	up to 50 phone numbers	1



Catalogue not up to date?  
Scan the QR or [click here](#)  
to view the latest version

[Click to jump back to top](#)

**KFV Genius Internal Push Button**

Push button is used to open the door via the internal release from multi-point locks with the ‘comfort’ option.



Product Code	Description	Material	Packaging Unit
3413891	Internal push button with 1m cable	matt stainless steel	1



Catalogue not up to date?  
Scan the QR or [click here](#)  
to view the latest version

[Click to jump back to top](#)

KFV Genius Bolt Switch Contact & Coupling Relays

12V coupling relay is used for retrofitting the electric opener to Genius or the A-opener, 24V coupling relay is used to confirm the Genius Type B to an alarm system or motorised door drive. Bolt switch contact is used to query whether the hook bolt has been completely locked off .



Product Code	Description	Length (mm)	Voltage	Packaging Unit
3496082	Bolt switch contact with cable	6	n/a	1
2274274	Coupling relay	n/a	24	1
3327769	Coupling relay	n/a	12	1



Catalogue not up to date?  
Scan the QR or [click here](#)  
to view the latest version

[Click to jump back to top](#)

### NUKI Smart Lock 2.0 & Accessories

Smart lock enables locking and unlocking from a smartphone with easy installation (no screws or drilling) and can be integrated into existing smart home systems. Manage up to 200 access permissions. Accessories including keypad (access by entering a six-digit code), bridge (connects Smart Lock to WI-FI, allowing online management and remote control) and fob (control of the Smart Lock with a push of a button) also available.



Product Code	Description	Dimensions (mm)	Packaging Unit
220113	NUKI Smart Lock 2.0	110 x 60 x 62	1
100405	NUKI fob	55 x 24 x 6	1
220284	NUKI keypad	90 x 30 x 15	1
220443	NUKI bridge	60 x 60 x 50	1
220472	NUKI Combo - Smart Lock 2.0 & bridge	110 x 60 x 62	1



Catalogue not up to date?  
Scan the QR or [click here](#)  
to view the latest version

[Click to jump back to top](#)

VITA EM 180 Electromagnetic Lock

Locking device consisting of an electromagnet that contacts an armature plate to lock when energized. Works in conjunction with Request to Exit device or emergency egress button.



Product Code	Description	Length (mm)	Width (mm)	Capacity (kg)	Reed Output	Packaging Unit
EM-180R	Electromagnetic lock - rebate mount	201	34	180	yes	1
EM-180HR	Electromagnetic lock - surface mount	166	34	180	yes	1



Catalogue not up to date?  
Scan the QR or [click here](#)  
to view the latest version

[Click to jump back to top](#)

VITA EM 300 Electromagnetic Lock

Locking device consisting of an electromagnet that contacts an armature plate to lock when energized. Works in conjunction with Request to Exit device or emergency egress button.



Product Code	Description	Length (mm)	Width (mm)	Capacity (kg)	Reed Output	Packaging Unit
EM-300R	Electromagnetic lock - rebate mount	228	39	300	yes	1
EM-300HR	Electromagnetic lock - surface mount	228	39	300	yes	1



Catalogue not up to date?  
Scan the QR or [click here](#)  
to view the latest version

[Click to jump back to top](#)



VITA EM 500 Electromagnetic Lock

Locking device consisting of an electromagnet that contacts an armature plate to lock when energized. Works in conjunction with Request to Exit device or emergency egress button.



Product Code	Description	Length (mm)	Width (mm)	Capacity (kg)	Reed Output	Packaging Unit
EM-500R	Electromagnetic lock - rebate mount	266	66	500	no	1
EM-500HR	Electromagnetic lock - surface mount	266	66	500	yes	1



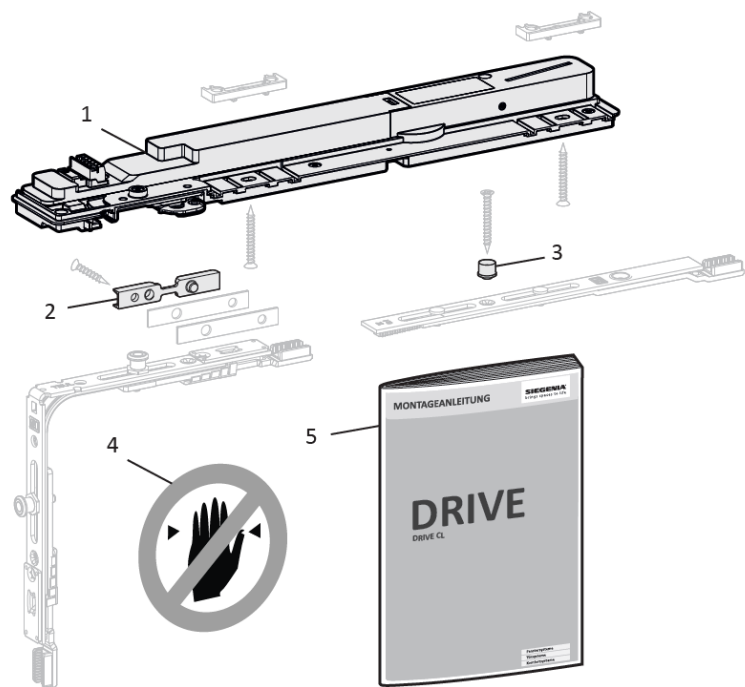
Catalogue not up to date?  
Scan the QR or [click here](#)  
to view the latest version

[Click to jump back to top](#)

Siegenia Drive CL - Tilt and Turn Window Automation

Motorised chain drives for awning and tilt windows.

Note: Parts 4 and 5 included with Drive CL



Product Code	Description	Component	Packing Unit
GAKE1001-093010	Drive CL - DIN R	1,4,5	1
GAKE1002-093010	Drive CL - DIN L	1,4,5	1
GAKO1000-093020	Hook Lock	2	1
708644	Ring Joint Sleeve	3	1



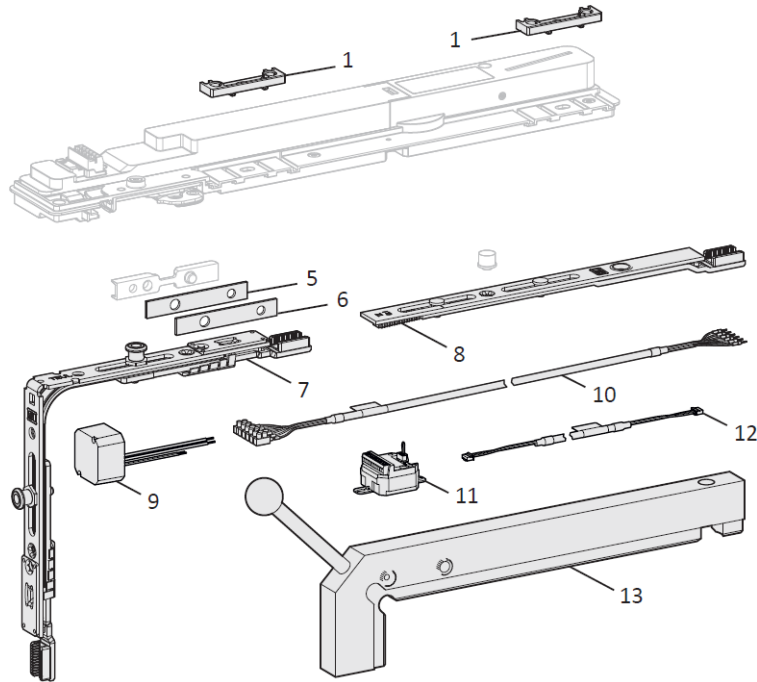
Catalogue not up to date?  
Scan the QR or [click here](#)  
to view the latest version

[Click to jump back to top](#)

## Siegenia Drive CL - Accessories

### Accessories for Drive CL

Please note that components 1, 5 and 6 are profile dependant. Please contact Siegware for further information on parts specific to your profile.



Product Code	Description	Component	Packing Unit
PDP - FRUP02	Packer RB FBS - Refer to Window Hardware Catalogue	1	100
GRUP0020-004010	Hook Lock Packer 1.0mm	5,6	1
GRUP0010-004010	Hook Lock Packer 1.5mm	5,6	1
TEUL4070-100010	Corner Drive AF VSO 2RS	7	50
TZZS0150-100010	Linkage AF Size 1	8	25
GANE0090-000010	Power Supply 24V	9	1
GAPC0050-000010	Connecting Cable - 2m	10	1
GAPC0020-000010	Connecting Cable - 5m	10	1
3510884	IO Module (Wi-Fi / Cloud / Si-Bus)	11	1
3510886	IO Module (Si-Bis or Free Inputs)	11	1
GAPC0030-000010	Si-Bus Connecting Cable - 2m	12	1
GAPC0040-000010	Si-Bus Connecting Cable - 5m	12	1
GABB0040A0E5010	Jig for CL Drive	13	1



**Catalogue not up to date?**  
Scan the QR or [click here](#)  
to view the latest version

[Click to jump back to top](#)

## Comunello Smart Chain Drive

**Motorised chain drives for awning and tilt windows.**



Product Code	Description	Push / Pull Force	Colour	Packaging Unit
MSMART20H0B00	Motorised Smart chain drive	200N/250N	black	1
MSMART20H0W00	Motorised Smart chain drive	200N/250N	white	1
MSMART20H0G00	Motorised Smart chain drive	200N/250N	silver	1



**Catalogue not up to date?**  
Scan the QR or [click here](#)  
to view the latest version

[Click to jump back to top](#)

## Comunello Chain Drive

Motorised chain drives for awning and tilt windows.



Product Code	Description	Push / Pull Force	Colour	Packaging Unit
ML25S138H0B00	Motorised chain drive	250N	black	1
ML25S138H0W00	Motorised chain drive	250N	white	1
ML35R140H0B00	Motorised chain drive - remote controllable	350N	black	1
ML35R140H0W00	Motorised chain drive - remote controllable	350N	white	1
MXOOAT01	1 channel remote control	-	white	1
MXOOAT06	6 channel remote control	-	white	1



Catalogue not up to date?  
Scan the QR or [click here](#)  
to view the latest version

[Click to jump back to top](#)

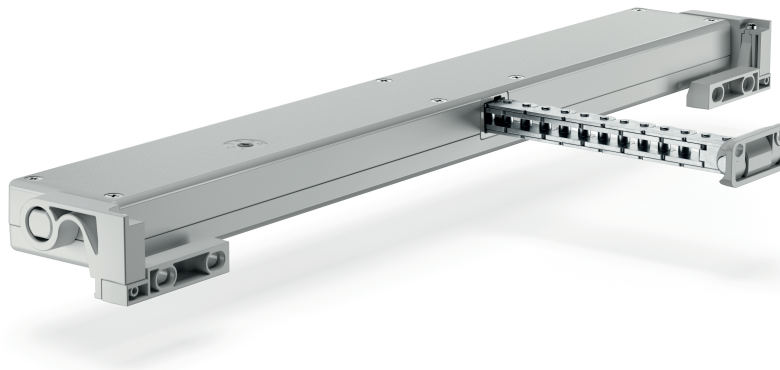
## Comunello Liwin L35 Slim - WIFI

Motorised chain drive with WiFi capability to synchronize drives. Suitable for awning and tilt windows.

Millimetric adjustment possible via Mowin App

Product features:

- Soft start and stop
- One Smart app control for user / Mowin App for installer
- Power requirement: 230V
- 31W power draw (0.14A @ 230V)
- Synchronization - YES - Up to 8 actuators
- Obstacle detection
- Dimensions - 27 x 54 x 440mm
- Up to 30 actuators in parallel



Product Code	Standard Stroke Lengths (mm)	Push / Pull Force	Colour	Packaging Unit
ML35SVNWF40H0B00Z	120 - 300 - 350 - 400	350N / 350N	Black	1
ML35SVNWF40H0G00Z	120 - 300 - 350 - 400	350N / 350N	Silver	1
ML35SVNWF40H0W00Z	120 - 300 - 350 - 400	350N / 350N	White	1

\*Millimetric adjustment possible via Mowin app.



Catalogue not up to date?  
Scan the QR or [click here](#)  
to view the latest version

[Click to jump back to top](#)

## Comunello Star 25

Motorised chain drive. Suitable for awning and tilt windows.

Product features:

- Soft start and stop
- Power requirement: 230V
- 28W power draw (0.19A @ 230V)
- Synchronization - NO
- Obstacle Detection
- One Smart app control
- 34 x 48 x 433mm
- Up to 30 actuators in parallel



Product Code	Stroke Lengths (mm)	Push / Pull Force	Colour	Packaging Unit
MT25SVNNW38H0B00Z	100 - 150 - 200 - 250 - 300 - 380	250N / 200N	Black	1
MT25SVNNW38H0G00Z	100 - 150 - 200 - 250 - 300 - 380	250N / 200N	Silver	1
MT25SVNNW38H0W00Z	100 - 150 - 200 - 250 - 300 - 380	250N / 200N	White	1



Catalogue not up to date?  
Scan the QR or [click here](#)  
to view the latest version

[Click to jump back to top](#)

## Comunello Control Units

Control units to suit compatible comunello drives such as the L35 Slim and Star 25.

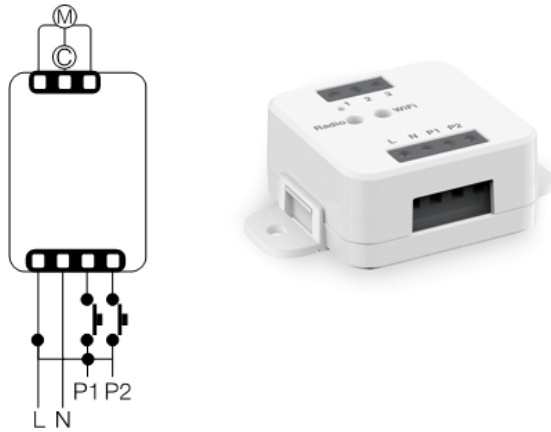
Control units for controlling actuators via:

- Wired button
- One Smart App
- Alexa and Google Home

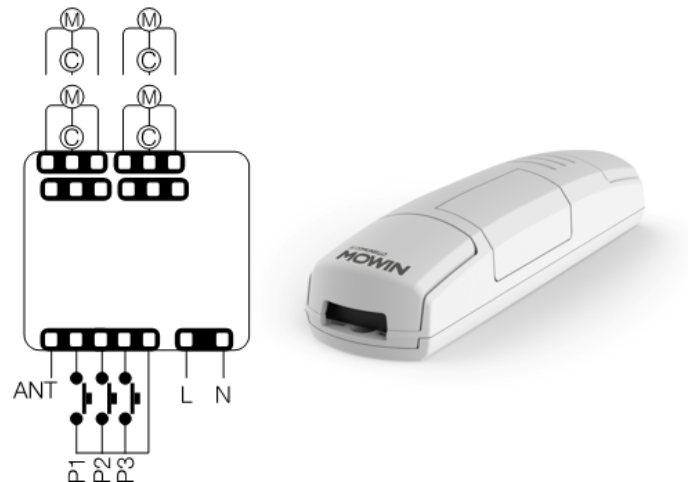
Product features:

- Max output 500W for 230V actuators
- 433.92MHz Radio Reciever
- 2.4 GHz WiFi receiver
- Connects to comunello sensors.

### AF 820



### AF 850



Product Code	Description	Control Groups	Colour	Packaging Unit
MX00AU06H0W00	AF 820 CONTROL UNIT 230V WIFI	1	White	1
MX00AU08H0W00	AF 850 CONTROL UNIT 230V WIFI	4	White	1



Catalogue not up to date?  
Scan the QR or [click here](#)  
to view the latest version

[Click to jump back to top](#)



## STG BEIKIRCH LM Chain Drive

230 V Motorised chain drives for bottom hung, top hung and flat windows.

*Image Coming Soon*

Product Code	Description	Push / Pull Force	Colour	Packaging Unit
2108943	LM 200 chain drive	200	silver	1
2109024	LM 300 chain drive	200	silver	1



Catalogue not up to date?  
Scan the QR or [click here](#)  
to view the latest version

[Click to jump back to top](#)

Liwin Support Bracket



Product Code	Description	Colour	Packaging Unit
ML00AS01N0B00	Support bracket	Black	1
ML00AS01N0W00	Support bracket	White	1



Catalogue not up to date?  
Scan the QR or [click here](#)  
to view the latest version

[Click to jump back to top](#)

Comunello Replacement Sash Mount



Product Code	Description	Colour	Packaging Unit
ML00AA03N0W00	Sash mount	White	1



Catalogue not up to date?  
Scan the QR or [click here](#)  
to view the latest version

[Click to jump back to top](#)

STROXX Digital Door Viewer

Digital peephole with 3.2 inch TFT display, black front and silver frame. Suitable for door thicknesss between 38-110mm. 105 deg viewing angle.



Product Code	Description	Screen (in)	Dimensions (mm)	Packaging Unit
0009036071	Digital door viewer	3	128 x 68 x 15	1

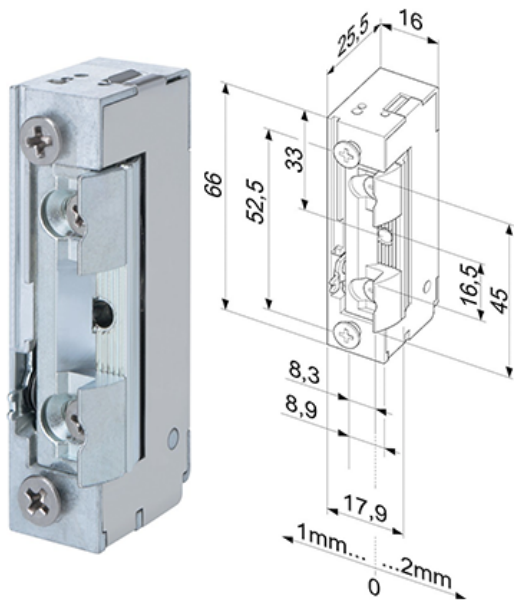


Catalogue not up to date?  
Scan the QR or [click here](#)  
to view the latest version

[Click to jump back to top](#)

Daytime Release

Door frame electric door opener with adjustable latch.



Product Code	Width	Height	Voltage	Packaging Unit
118E13A71	16mm	66mm	10-24V	1



Catalogue not up to date?  
Scan the QR or [click here](#)  
to view the latest version

[Click to jump back to top](#)

Daytime Release

For retrofitting or for standard use with KFV frame parts; the main lock latch is released using mechanical locking mechanism, and has a locking slider for easy switching.



Product Code	Description	Latch Plate Size (mm)	Packaging Unit
3493188	Daytime release 115A	>24	1
3493198	Daytime release 115B	<24	1



Catalogue not up to date?  
Scan the QR or [click here](#)  
to view the latest version

[Click to jump back to top](#)

## Automation Catalogue

*53 Haddon Drive  
PO Box 27  
Ballan VIC 3342  
Australia*

*+61 03 5368 1181  
info@siegware.com.au  
www.siegware.com.au  
www.siegware.co.nz*